

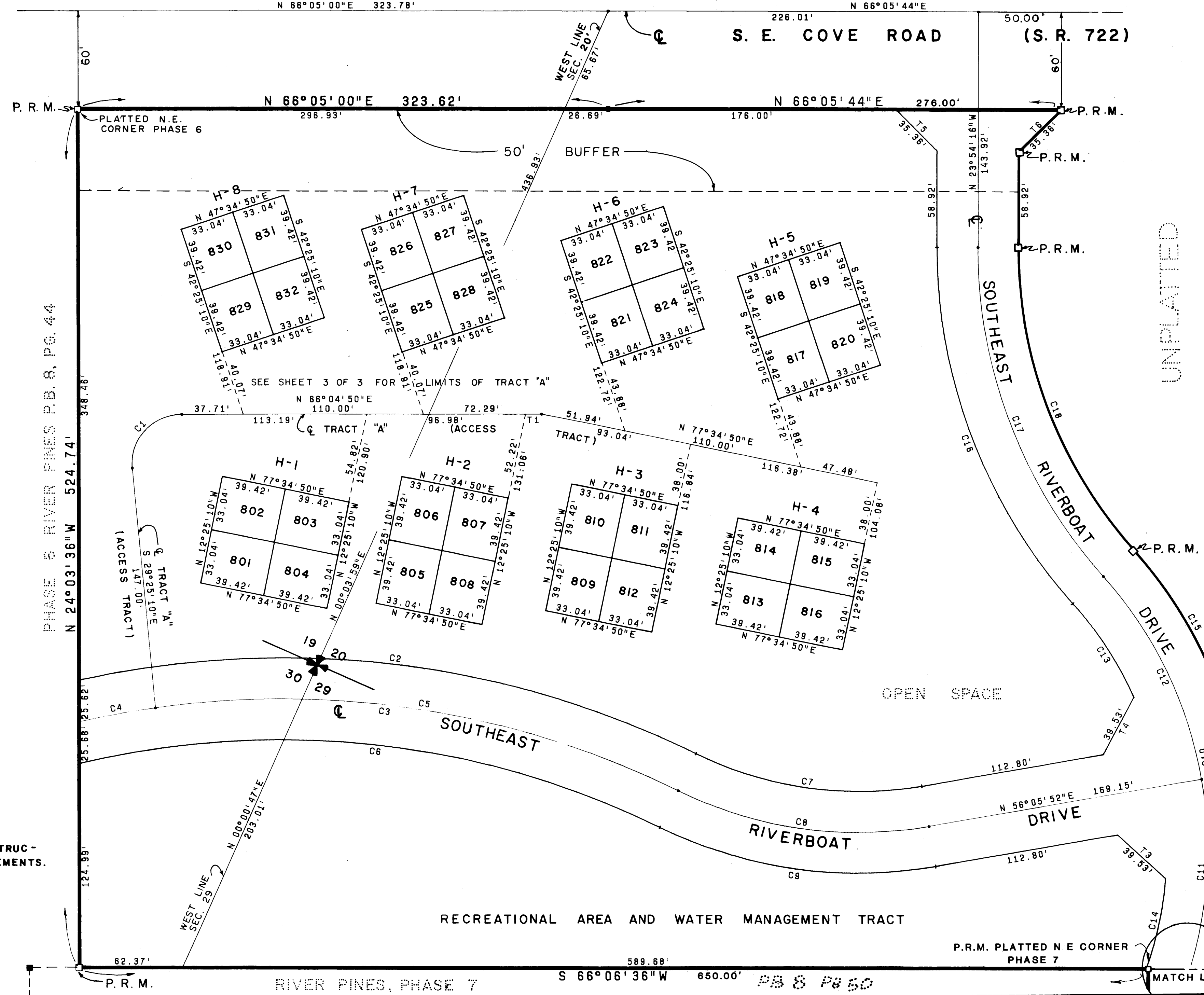
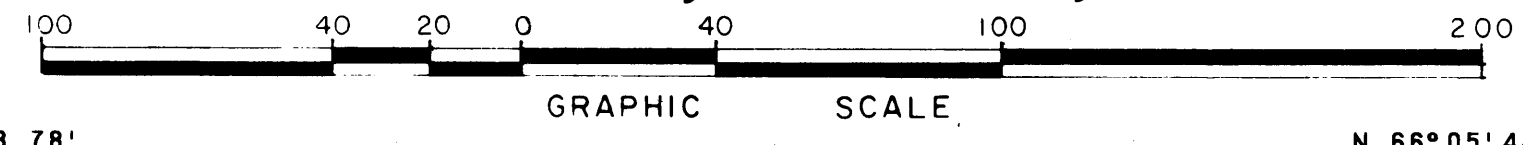
# RIVER PINES

## AT MILES GRANT

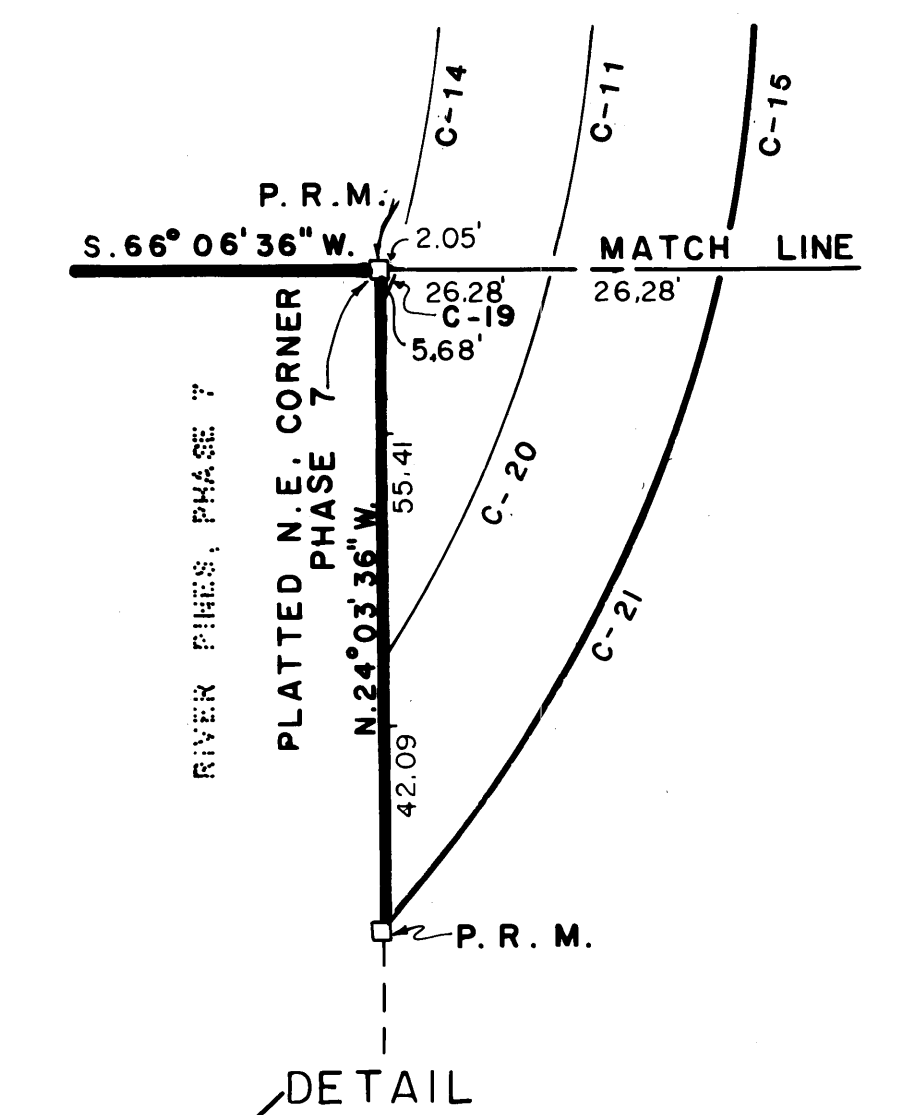
### PHASE 8 OF A P.U.D.

A RESUBDIVISION OF GOVERNMENT LOTS 1, 3, 5, & 6,  
IN SECTIONS 19, 20, 29 & 30, TOWNSHIP 38 SOUTH, RANGE 42 EAST,  
MARTIN COUNTY, FLORIDA, JAN. 1981

PL. B 8.  
PG 54



UNPLATTED



NOTE:  
THERE SHALL BE NO BUILDINGS OR OTHER STRUCTURES  
PLACED ON UTILITY EASEMENTS.  
THERE SHALL BE NO BUILDINGS OR ANY KIND OF CONSTRUCTION  
OR TREES OR SHRUBS PLACED ON DRAINAGE EASEMENTS.

- P. R. M. = PERMANENT REFERENCE MONUMENT
- P. C. P. = PERMANENT CONTROL POINT
- EXISTING PERMANENT REFERENCE MONUMENT

NOTE:  
FOR CURVE TABLES  
SEE SHEET 1 OF 3

<b>ADAIR &amp; BRADY, INC.</b> CONSULTING ENGINEERS & LAND SURVEYORS <small>LAKE WORTH WEST PALM BEACH ORLANDO</small>		<b>RIVER PINES</b> AT MILES GRANT	
SCALE 1" = 40'	DWN G.M.W.	DATE 1/81	SHEET 2 OF 3
JOB NO 6-8525-D	CHKD. J.L.K.	DATE 1/81	FP 1155

RECREATIONAL AREA AND WATER MANAGEMENT TRACT

P.R.M. PLATTED N E CORNER PHASE 7

RIVER PINES, PHASE 7 S 66°06'36"W 650.00' PB 8 PG 54